



Furniture Catalog

MUJI
無印良品

DELIVERY FEES

First item \$ 80 / item (between 10am and 4pm*)
 Second item and thereafter \$ 40 / item (between 10am and 4pm*)

STEEL UNIT SHELF (SUS) · DESK SET and STEEL UNIT, SHELF (SUS) · DESK AND SHELVING SET, POCKET COIL MATTRESS WITH LEGS(including leg set) counted as one (1) item.

Shipping rates, charges, and services are subject to change without notice.

* Deliveries are from Monday - Saturday (Between 10am-4pm), varies based on location. Please ask a sales associate for more details.

* Please schedule an appointment for your delivery with a sales associate after your purchase in store.

DELIVERY AREA

Most products in this leaflet can be delivered to limited areas in NY, NJ, PA, CT, and MA.
 We apologize for any inconveniences. Please ask our staff for more details.

REGARDING LARGE PACKAGE (FOR BED FRAME AND MATTRESS)

Please check the EXAMPLE OF LARGE PACKAGE SIZE to see if the package can go through places such as hallways, stairways, and doorways, before purchasing the item. Please check the beams, lighting fixtures on the ceiling and other furniture in places where the item will be brought through. Our store still charges for the delivery fee in the event that package doesn't go through the passage and the item is returned to the store.

EXAMPLE OF LARGE PACKAGE SIZE	
POCKET COIL MATTRESS WITH LEGS SINGLE SIZE	39.4"w x 78.3"d x 12.2"h
POCKET COIL MATTRESS WITH LEGS DOUBLE SIZE	55.9"w x 78.3"d x 12.2"h
POCKET COIL SPRING MATTRESS DOUBLE SIZE	63.4"w x 77.2"d x 7.9"h

RETURN / EXCHANGE POLICY

- Merchandise may be returned or exchanged at the store where it was purchased within 30 days of purchase with a receipt.
- The returned merchandise must be in new and unused condition, and in the original packaging. No returns, refunds, exchanges, or credits will be issued without a receipt. Refunds will be issued in the original tender for the price paid. For purchase by traveler's check, cash back will be given.
- Non-returnable merchandise include but are not limited to the following: Personal care/use, table/kitchenware, health and beauty, bedding and underwear.
- Return/Exchange merchandise must be in the original condition with the original package and tags.
- Clothing that is unworn with tags and receipt can be returned and exchanged.
- MUJI reserves the right to deny any return/exchange based on the condition of the merchandise.
- Shipping charges are not refunded.
- No RETURNS on sale items.

NEW YORK STORE

MUJI SOHO
455 Broadway
tel:212.334.2002

MUJI TIMES SQUARE
620 Eighth Ave.
tel:212.382.2300

MUJI CHELSEA
16 W 19th Street
tel:212.414.9024

MUJI COOPER SQUARE
52 Cooper Square
tel:212.358.8693

MUJI FIFTH AVENUE
475 5th Ave
tel:212.447.1690

NEW JERSEY STORE

MUJI GARDEN STATE PLAZA
1 Garden State Plaza
tel:201.843.3154

BOSTON STORE

MUJI NEWBURY STREET
359 Newbury Street
tel:617.502.1170

© 2017 MUJI U.S.A. LIMITED All Rights Reserved

All product and price information may be subject to change. Any dimensions quoted are for guidance only. Prices and product details should be checked at one of our USA stores before making or requesting any purchases. All products are subject to availability.

www.muji.com/us



Pocket Coil Mattress with Legs

POCKET COIL MATTRESS WITH LEGS



The double cushioning effect of the mattress and the wood springs helps reduce the load on the back and hips. Use it as a sofa or as a bed, the decision is yours.

POCKET COIL MATTRESS WITH LEGS

SINGLE SIZE W 38.5" x D 77.9" x H 10.2"

Packaged: W 38.5" x D 78.3" x H 10.6"

Weight: 79lbs. Number of springs: 510

JAN# 38363521

\$ 399.00

DOUBLE SIZE W 55.1" x D 77.9" x H 10.2"

Packaged: W 55.9" x D 78.3" x H 10.6"

Weight: 108lbs. Number of springs: 720

JAN# 38363545

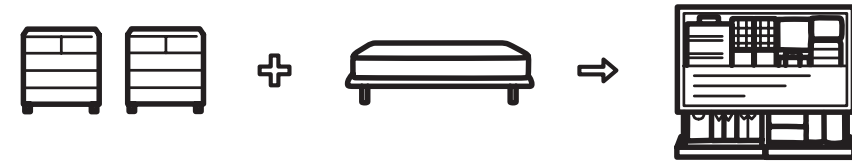
\$ 599.00

*Legs come in different sizes and colors. Please ask a store staff for more information
Legs - H10.2": Brown 15296989 / Natural 15296972

** Ventilate the mattress as needed to avoid the growth of mold.
** Please check the box size of this item to make sure that the package will fit through stairwells and doorways.



STORAGE BED



Bed + Storage

MUJI renewed its under-bed storage for a more efficient use of the room. The bed provides a larger storage space by adopting a structural design in which the mattress is supported by the storage boxes themselves.



[Top View]



Under the bed board
* Bed board is not provided under the open space.

Open space
A storage space is also provided behind the drawer space. In the open space under the double, you can store long or large objects, such as rugs, skis, comforters, and travel bags.
Inside dimensions of open space:
W 74.4" x H 9.2" (single) W 73.2" x H 9.2" (double)
W 72.8" x H 7.2" (queen)
Depth: single - 15.7" double - 33"
queen - 39.8"

Size	Colors	Bed Frame	Mattress	SPECIAL PRICE Bed Frame + Mattress	Headboard	Additional Box
Single W 41.5" x D 41.5" x H 10.6" Weight: Approx. 154 lbs	Oak	37407947 \$550.00	\$480.00	Save \$100 \$1,030.00 → \$930.00	37497849 \$120.00	37416659 \$100.00
	Walnut	37407985 \$580.00		Save \$100 \$1,060.00 → \$960.00	37497887 \$150.00	37416925 \$120.00
Double W 79.1" x D 58.4" x H 10.6" Weight: Approx. 174 lbs	Oak	37407961 \$650.00	\$580.00	Save \$120 \$1,230.00 → \$1,110.00	37497863 \$150.00	37416673 \$120.00
	Walnut	37408005 \$680.00		Save \$120 \$1,260.00 → \$1,140.00	37497900 \$180.00	37416949 \$150.00
Queen W 79.1" x D 66.3" x H 10.6" Weight: Approx. 190 lbs	Oak	38371229 \$690.00	\$680.00	Save \$150 \$1370.00 → \$1,220.00	38371304 \$230.00	38371267 \$150.00

Storage Bed



BODY FIT CUSHION



Body Fit Cushion

BODY FIT CUSHION

BODY	21.65" w x 21.65" d x 14.96" h	\$ 150.00
COVER	21.65" w x 21.65" d x 14.96" h (Gray Beige, Dark Brown, Charcoal Gray, Navy)	\$ 40.00
COVER	21.65" w x 21.65" d x 14.96" h (Navy Denim, Hickory Denim)	\$ 50.00

Its squared off shape offers greater support by keeping cushioning where it's needed most. Microbead filling offers a high degree of softness and support. The small beads also resist crushing over time to offer durability. Removable and washable.

*Body Fit Cushion cover is SOLD SEPERATELY

JAN# BODY: 37244955 COVER: GRAY BEIGE 37244979 / DARK BROWN 37244962
CHARCOAL GRAY 37461468 / NAVY 37353787
NAVY DENIM 38307068 / HICKORY DENIM 38307075

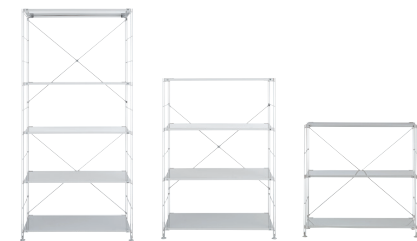


STEEL SHELVING UNITS



SUS STAINLESS SHELVING UNIT

1. 61179063	LARGE	33.9" w x 16.2" d x 69.1" h	\$ 525.95
2. 61179070	MEDIUM	33.9" w x 16.2" d x 47.2" h	\$ 425.95
3. 61179087	SMALL	33.9" w x 16.2" d x 32.7" h	\$ 325.95



SUS STEEL SHELVING UNIT - GRAY

1. 61179353	L NARROW	22.8" w x 16.2" d x 69.1" h	\$ 159.00
2. 61179360	M NARROW	22.8" w x 16.2" d x 47.2" h	\$ 109.00
3. 61179377	S NARROW	22.8" w x 16.2" d x 32.7" h	\$ 89.00
4. 61179391	LARGE	33.9" w x 16.2" d x 69.1" h	\$ 197.95
5. 61179407	MEDIUM	33.9" w x 16.2" d x 47.2" h	\$ 177.95
6. 61179414	SMALL	33.9" w x 16.2" d x 32.7" h	\$ 157.95

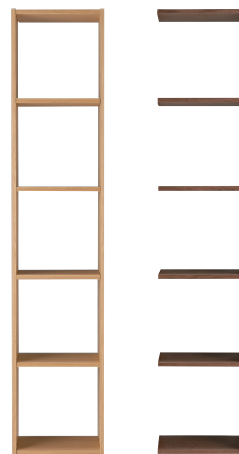
Maximum carrying capacity:
 LARGE up to 220 lbs. / MEDIUM up to 165 lbs. / SMALL up to 110 lbs.
 * Each Shelf board: 66 lbs.

Steel Shelving Unit



STACKING SHELF

Can be arranged vertically or horizontally according to your purpose. These open cube shelves can be used as storage, book shelves, and room divider.



STACKING SHELF 5 ROW

Size: 16.5" w x 11.2" d x 78.7" h

OAK \$ 310.25
WALNUT \$ 320.25

OAK 18121335 / WALNUT 18218615/37265646

ADDITIONAL SHELF 5 ROW

Size: 15.7" w x 11.2" d x 78.7" h

OAK \$ 259.25
WALNUT \$ 289.75

OAK 18121373 / WALNUT 18218646/37265677



STACKING SHELF 3 ROW

Size: 16.5" w x 11.2" d x 47.5" h

OAK \$ 239.95
WALNUT \$ 259.25

OAK 18121328 / WALNUT 18218608/37265639

ADDITIONAL SHELF 3 ROW

Size: 15.7" w x 11.2" d x 47.5" h

OAK \$ 219.95
WALNUT \$ 243.95

OAK 18121366 / WALNUT 18218639/37265660



STACKING SHELF 2 ROW

Size: 16.5" w x 11.2" d x 32" h

OAK \$ 189.95
WALNUT \$ 213.50

OAK 18121311 / WALNUT 18218592/37265622

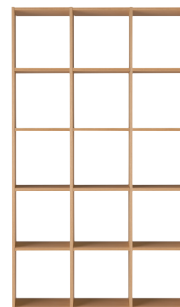
ADDITIONAL SHELF 2 ROW

Size: 15.7" w x 11.2" d x 32" h

OAK \$ 167.95
WALNUT \$ 198.25

OAK 18121359 / WALNUT 18218622/37265653

STACKING SHELF SETS

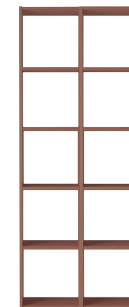


STACKING SHELF / 5 SHELVES 3 COMPARTMENTS

Size: 48.03" w x 11.22" d x 78.74" h

OAK \$ 750.75
WALNUT \$ 820.75

OAK 37263611 / WALNUT 37267053



STACKING SHELF / 5 SHELVES 2 COMPARTMENTS

Size: 32.28" w x 11.22" d x 78.74" h

OAK \$ 520.75
WALNUT \$ 610.00

OAK 37263628 / WALNUT 37267060



STACKING SHELF / 3 SHELVES 3 COMPARTMENTS

Size: 48.03" w x 11.22" d x 47.63" h

OAK \$ 620.75
WALNUT \$ 680.75

OAK 37263635 / WALNUT 37267077



STACKING SHELF / 3 SHELVES 2 COMPARTMENTS

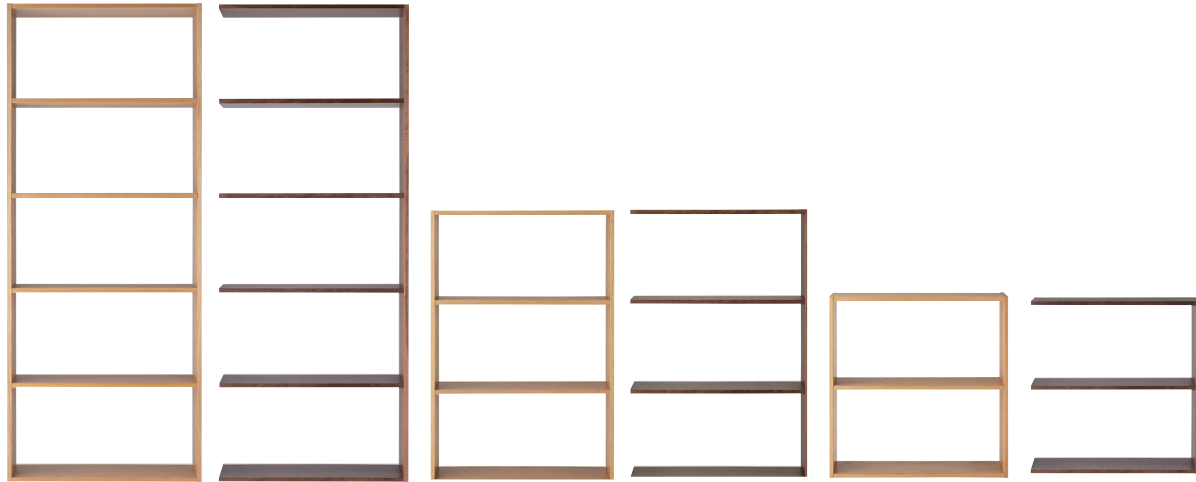
Size: 32.28" w x 11.22" d x 47.63" h

OAK \$ 420.75
WALNUT \$ 460.75

OAK 37263970 / WALNUT 37267084

Stacking Shelf

STACKING SHELF



STACKING SHELF 5 ROW WIDE

Size: 32.06" w x 11.2" d x 78.7" h

OAK \$ 420.75
WALNUT \$ 470.75

OAK 18340057 / WALNUT 18340026/37265707

ADDITIONAL SHELF 5 ROW WIDE

Size: 31.3" w x 11.2" d x 78.7" h

OAK \$ 390.75
WALNUT \$ 429.75

OAK 18482887 / WALNUT 18482870/37265738

STACKING SHELF 3 ROW WIDE

Size: 32.06" w x 11.2" d x 47.5" h

OAK \$ 320.75
WALNUT \$ 340.75

OAK 18340040 / WALNUT 18340019/37265691

ADDITIONAL SHELF 3 ROW WIDE

Size: 31.3" w x 11.2" d x 47.5" h

OAK \$ 290.75
WALNUT \$ 320.75

OAK 18482863 / WALNUT 18482856/37265721

STACKING SHELF 2 ROW WIDE

Size: 32.06" w x 11.2" d x 32" h

OAK \$ 250.75
WALNUT \$ 270.75

OAK 18340033/37263215 / WALNUT 18340002/37265684

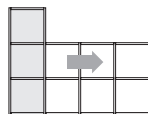
ADDITIONAL SHELF 2 ROW WIDE

Size: 31.3" w x 11.2" d x 32" h

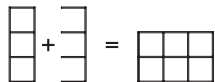
OAK \$ 230.75
WALNUT \$ 274.75

OAK 18482849 / WALNUT 18482832/37265714

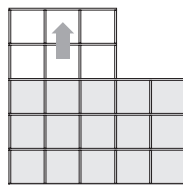
COMBINATION EXAMPLES



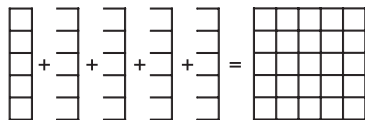
3 row-basic unit x 1 + 3-row add-on unit x 1



Place the basic unit horizontally and add up upward.
Max. load: total 88 lbs = 88 lbs x 2 units ÷ 2



5 row-basic unit x 1 + 5-row add-on unit x 4



Place the basic unit vertically and add on sideways.
Max. load: total 330 lbs = 132 lbs x 5 units ÷ 2

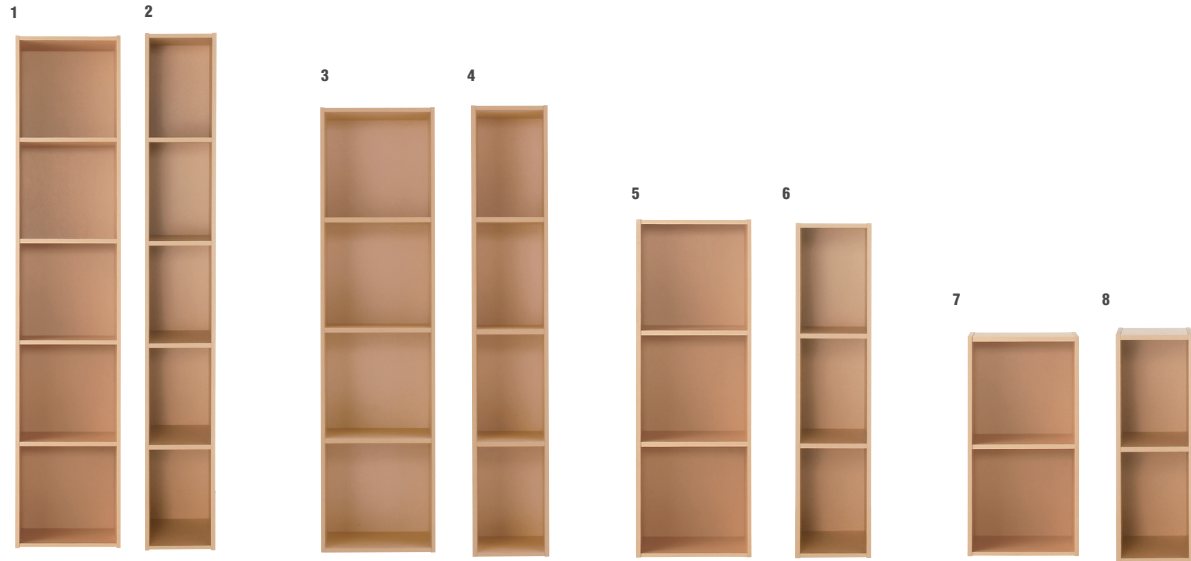


Pulp Board Boxes

The formula for calculating the max. load when units are connected:

Total max. load = Max. load/per unit x number of units ÷ 2

PULP BOARD BOXES



1. PULP BOARD BOX A4 2-SIDE 5ROW

Size : 14.8" w x 11.4" d x 70.9" h
 Maximum carrying capacity per shelf is 33 lbs.
 Total carrying capacity of unit is 88 lbs.
 JAN# 47549201
\$ 61.25 → \$ 49.00

4. PULP BOARD BOX SLIM 4ROW

Size : 9.8" w x 11.4" d x 56.7" h
 Maximum carrying capacity per shelf is 30 lbs.
 Total carrying capacity of unit is 77 lbs.
 JAN# 18511358
\$ 48.50 → \$ 39.00

7. PULP BOARD BOX A4 2-SIDE 2ROW

Size : 14.8" w x 11.4" d x 28.7" h
 Maximum carrying capacity per shelf is 33 lbs.
 Total carrying capacity of unit is 44 lbs.
 JAN# 47549188
\$ 29.95 → \$ 25.00

9. PULP BOARD BOX MULTI RACK

Size : 14.5" w x 6.9" d x 42.9" h
 Maximum carrying capacity per shelf is 17.6 lbs.
 Total carrying capacity of unit is 55 lbs.
 JAN# 18121724
\$ 51.25 → \$ 39.00

2. PULP BOARD BOX SLIM 5ROW

Size : 9.8" w x 11.4" d x 70.9" h
 Maximum carrying capacity per shelf is 33 lbs.
 Total carrying capacity of unit is 88 lbs.
 JAN# 18121717
\$ 58.50 → \$ 45.00

5. PULP BOARD BOX A4 2-SIDE 3ROW

Size : 14.5" w x 11.4" d x 42.9" h
 Maximum carrying capacity per shelf is 30 lbs.
 Total carrying capacity of unit is 55 lbs.
 JAN# 47549195
\$ 39.25 → \$ 35.00

8. PULP BOARD BOX SLIM 2ROW

Size : 9.8" w x 11.4" d x 28.7" h
 Maximum carrying capacity per shelf is 33 lbs.
 Total carrying capacity of unit is 44 lbs.
 JAN# 18121694
\$ 28.50 → \$ 19.00

10. PULP BOARD BOX FREE RACK

Size : 9.8" w x 11.4" d x 42.9" h
 Maximum carrying capacity per shelf is 17.6 lbs.
 Total carrying capacity of unit is 55 lbs.
 JAN# 18121731
\$ 44.95 → \$ 35.00

3. PULP BOARD BOX A4 2-SIDE 4ROW

Size : 14.5" w x 11.4" d x 56.7" h
 Maximum carrying capacity per shelf is 30 lbs.
 Total carrying capacity of unit is 77 lbs.
 JAN# 18511341
\$ 51.25 → \$ 45.00

6. PULP BOARD BOX SLIM 3ROW

Size : 9.8" w x 11.4" d x 42.9" h
 Maximum carrying capacity per shelf is 30 lbs.
 Total carrying capacity of unit is 55 lbs.
 JAN# 18121700
\$ 38.50 → \$ 29.00



PULP BOARD BOXES



11. PULP BOARD BOX WITH CASTER

Size : 17.4" w (incl. handle) x 11.4" d x 31" h (Horizontal)
 Size : 29.9" w (incl. handle) x 11.4" d x 25.2" h (Vertical)
 Maximum carrying capacity per shelf is 30 lbs.
 Total carrying capacity of unit is 44 lbs.
 JAN# 61789712
\$ 89.95 → \$ 59.00



12. CARDBOARD BOX 1DRAWER

Size : 13.4" w x 10.6" d x 13.4" h
 Modulated to be used with PULP BOARD BOX A4 2-SIDE.

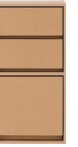


JAN# 76370888
\$ 12.50



13. CARDBOARD BOX 2DRAWER

Size : 13.4" w x 10.6" d x 13.4" h
 Modulated to be used with PULP BOARD BOX A4 2-SIDE.



JAN# 76249276
\$ 23.50

PULP BOARD BOX JOINT PARTS FOR 2-SIDE (#1,2) and MULTI RACK (#4)



2pcs/set

JAN# 18960941

\$ 3.95



DESKS



PINEWOOD FOLDING TABLE - SMALL

SMALL 31.5" w x 19.7" d x 13.8" h

\$ 62.75

With beautiful grain and natural warm texture. Table also folds, allowing you to store it away and save space.

JAN# Small 18499434



PINEWOOD FOLDING TABLE - LARGE

LARGE 31.5" w x 19.7" d x 27.5" h

\$ 82.25

With beautiful grain and natural warm texture. Table also folds, allowing you to store it away and save space.

JAN# Large 18499441

SIDE FURNITURE



BEECH COAT STAND

18.8" w x 16.5" d x 68.3" h

\$ 109.75

JAN# 61013107

SOLID WOOD FURNITURE



OAK BENCH S

15892365 17.7" w x 11.8" d x 17.3" h

\$ 129.50



OAK BENCH L

15892358 39.3" w x 11.8" d x 17.3" h

\$ 159.50

CHAIRS



BEECH WOOD FOLDING CHAIR PLYWOOD SEAT

18.1" w x 20.5" d x 31.9" h

\$ 79.75 → \$ 39.88

Foldable. Features a molded plywood seat.

- * Do not stand on chair.
- * This item can be delivered, we will charge general delivery fee.

JAN# 47178456



OAK PAPERCORD CHAIR

22" w x 18.7" d x 28.4" h

\$ 420.00

Features a papercord material seat. Frame is designed to fit the body.

- * Do not stand on chair.
- * This item can be delivered, we will charge general delivery fee.

JAN# 15256433



OAK ARM CHAIR WITH ROUND LEGS

21.6" w x 12.6" d x 29.2" h

\$490.00 → \$ 245.00

*MUJI Fifth Avenue Exclusive

* Do not stand on chair.

* This item can be delivered, we will charge general delivery fee.

JAN# 15902040



RESIN STEEL CHAIR

18.9" w x 19.7" d x 32.3" h

\$ 121.50 → \$60.75

Available in Light-gray and Black
Polypropylene resin seat with convenient stack and store function.
Light weight with strong steel frame.

- * Do not stand on chair.
- * This item cannot be delivered.

JAN# Dark Grey 15382309



WORKING CHAIR

21.8" w x 20.8" d x 29.1~33.1" h

\$197.75 → \$ 98.88

Office Chair Arms 2pcs

\$34.75 → \$ 17.00

Adjustable.

- * Do not stand on chair.
- * This item can be delivered, we will charge general delivery fee.

JAN# Gray 18121298 / Gray Chair Arms 18121861 /



Polypropylene Storage Units

POLYPROPYLENE STORAGE UNITS

Made of translucent polypropylene material. This storage system has a simple design and can accommodate various storage items. It can be placed in the closet, or be displayed as freestanding piece.

Polypropylene Storage Box



PP STORAGE DRAWER / SMALL
 Size: 13.3" w x 17.5" d x 6.8" h **\$ 18.50**
 Maximum load: 11 lb
 Maximum stacking: 8
 JAN# 15199686 / 18816170



PP STORAGE DRAWER / LARGE
 Size: 13.3" w x 17.5" d x 9" h **\$ 19.50**
 Maximum load: 11 lb
 Maximum stacking: 7
 JAN# 15527021 / 18816163



PP STORAGE DRAWER / DEEP
 Size: 13.3" w x 17.5" d x 11.5" h **\$ 21.50**
 Maximum load: 11 lb
 Maximum stacking: 6
 JAN# 15237005 / 18816156



PP CLOTHING DRAWER / SMALL
 Size: 15.5" w x 25.5" d x 6.8" h **\$ 23.50**
 Maximum load: 15.4 lb
 Maximum stacking: 8
 JAN# 15112104



PP CLOTHING DRAWER / LARGE
 Size: 15.5" w x 25.5" d x 9" h **\$ 25.50**
 Maximum load: 15.4 lb
 Maximum stacking: 8
 JAN# 15112098



PP CLOTHING DRAWER / DEEP
 Size: 15.5" w x 25.5" d x 11.5" h **\$ 29.50**
 Maximum load: 15.4 lb
 Maximum stacking: 6
 JAN# 15112081



PP CLOSET CASE WITH DRAWER / SMALL
 Size: 17.3" w x 21.5" d x 6.8" h **\$ 23.50**
 Maximum load: 15.4 lb
 Maximum stacking: 8
 JAN# 15236640



PP CLOSET CASE WITH DRAWER / LARGE
 Size: 17.3" w x 21.5" d x 9" h **\$ 25.50**
 Maximum load: 15.4 lb
 Maximum stacking: 7
 JAN# 15199709



Polypropylene Storage Case



PP CASE WITH 2 DRAWERS

Size: 10.2" w x 14.5" d x 4.5" h **\$ 22.50**
 Maximum load: 3.3 lb
 Maximum stacking: 10
 JAN# 76748984



PP CASE WITH DRAWER

Size: 10.2" w x 14.5" d x 4.5" h **\$ 15.50**
 Maximum load: 6.6 lb
 Maximum stacking: 10
 JAN# 76748977



PP CASE WITH DRAWER / DEEP

Size: 10.2" w x 14.5" d x 6.9" h **\$ 18.50**
 Maximum load: 8.9 lb / Can store 22 DVDs.
 Maximum stacking: 6
 JAN# 76749011



PP CASE WITH DRAWER SHALLOW / SLIM

Size: 5.2" w x 14.5" d x 4.5" h **\$ 12.50**
 Maximum load: 4.4 lb
 Maximum stacking: 6
 JAN# 76749042



PP CASE WITH DRAWER DEEP / SLIM

Size: 5.2" w x 14.5" d x 7" h **\$ 16.50**
 Maximum load: 4.4 lb
 Maximum stacking: 4 / Can store 20 CDs.
 JAN# 76749035



PP CASE WITH 2 DRAWERS / DEEP

Size: 10.2" w x 14.5" d x 6.9" h **\$ 28.50**
 Maximum load: 4.4 lb / Can store 44 CDs.
 Maximum stacking: 6
 JAN# 76749028



PP CASE WITH 3 DRAWERS

Size: 10.2" w x 14.5" d x 12.5" h **\$ 34.50**
 Maximum load: 6.6 lb
 Maximum stacking: 3
 JAN# 76748991



PP CASE WITH 6 DRAWERS

Size: 10.2" w x 14.5" d x 12.5" h **\$ 53.50**
 Maximum load: 3.3 lb
 Maximum stacking: 3
 JAN# 76749004



Polypropylene Additional Drawer



ADDITIONAL PP STORAGE / SHALLOW

Size: 7" w x 15.7" d x 32.7" h **\$ 11.50**
 Maximum stacking: 10
 JAN# 15880171



ADDITIONAL PP STORAGE

Size: 7" w x 15.7" d x 32.7" h **\$ 13.50**
 Maximum load: 4.4lb
 Maximum stacking: 5
 JAN# 47721584

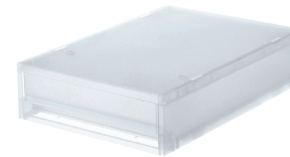
*This item can be combined with PP STACKING DRAWER HALF and PP STACKING ADDITIONAL BOX DEEP.
 *This Item cannot be disassembled once put together.



ADDITIONAL PP STORAGE / DEEP

Size: 7" w x 15.7" d x 12" h **\$ 17.50**
 Maximum stacking: 4
 JAN# 15880164

Polypropylene Storage Case / Extra Shallow



PP CASE WITH 1 DRAWER / FLAT

Size: 10.2" w x 14.6" d x 3.5" h **\$ 13.50**
 Maximum load: 4.4lb
 Maximum stacking: 13
 JAN# 76749066



PP CASE WITH 2 DRAWERS / FLAT

Size: 10.2" w x 14.6" d x 6.5" h **\$ 22.50**
 Maximum load: 4.4lb
 Maximum stacking: 7
 JAN# 76749073



Polypropylene Storage Stocker



PP STORAGE SET WITH CASTERS 1

Size: 7" w x 15.7" d x 32.7" h **\$ 49.50**

Inside dimensions: (Drawer) approx. 5.1" w x 14" d x 6.7" h
(Deep drawers) approx. 4.9" w x 13.8" d x 10.4" h

Polypropylene (uncolored)

JAN# 15880188

*This item can be combined with PP ADDITIONAL STORAGE



PP STORAGE SET WITH CASTERS 2

Size: 7" w x 15.7" d x 32.7" h **\$ 57.50**

Inside dimensions: (Drawer) approx. 5.1" w x 14" d x 6.7" h
(Deep drawers) approx. 4.9" w x 13.8" d x 10.4" h
(Shallow drawers) approx. 5.1" w x 14.2" d x 2.8" h

Polypropylene (uncolored)

JAN# 15880195

*This item can be combined with PP ADDITIONAL STORAGE.



PP STORAGE SET WITH CASTERS 3

Size: 7" w x 15.7" d x 48" h **\$ 73.50**

Inside dimensions: (Drawer) approx. 5.1" w x 13.9" d x 6.7" h
(Deep drawers) approx. 4.9" w x 13.8" d x 10.4" h
(Shallow drawers) approx. 5.1" w x 14.1" d x 2.8" h

Polypropylene (uncolored)

JAN# 15880201

*Cannot be disassembled.



PP STORAGE SET WITH CASTERS 4

Size: 7" w x 15.7" d x 48" h **\$ 77.50**

Inside dimensions: (Drawer) approx. 5.1" w x 13.9" d x 6.7" h
(Deep drawers) approx. 4.9" w x 13.8" d x 10.4" h
(Shallow drawers) approx. 5.1" w x 14.2" d x 2.8" h

Polypropylene (uncolored)

JAN# 15880218

* Cannot be disassembled.



4 STORAGE SET WITH CASTERS

Size: 7" w x 15.7" d x 32.7" h **\$ 44.50**

Inside dimensions: (Drawer) approx. 5.1" w x 13.9" d x 6.7" h
(Deep drawers) approx. 4.9" w x 13.9" d x 6.7" h

Polypropylene (uncolored)

JAN# 15521821

*This item can be combined with PP ADDITIONAL STACKING RACK.

Polypropylene Storage Caster



CASTER FOR PP STORAGE

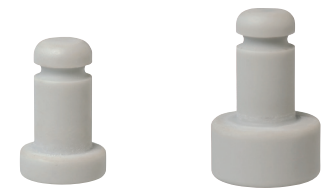
Size: 1.5 - 1.7" h (4pc/set) **\$ 5.75**

JAN# 15523788

ITEMS CAN BE USED WITH THE CASTERS:

- PP CARRYING BOX DEEP, LARGE & SMALL
- PP CARRYING BOX WITH LOCK DEEP, LARGE & SMALL
- PP FOLDING CARRYING BOX LARGE
- PP STORAGE DRAWER DEEP, LARGE & SMALL
- PP STORAGE DRAWER WIDE DEEP, LARGE & SMALL
- PP CLOTHING DRAWERS DEEP, LARGE & SMALL
- PP CLOSET CASE WITH DRAWERS DEEP, LARGE & SMALL
- PP STORAGE SET - ALL TYPES
- MDF STORAGE BOX, DRAWER TYPE SHALLOW 6 ROWS W/ CASTER
- MDF STORAGE BOX, DRAWER TYPE DEE 4 ROWS W/ CASTER
- PP TRASH BIN FOR SORTING TRASH LARGE & SMALL - 45L
- PP TRASH BIN
- PP CASE WITH DRAWERS - ALL TYPES
- PP WAGON STORAGE WITH CASTERS LARGE & SMALL
- PP LAUNDRY BASKET
- PP DOCUMENT CASE - ALL TYPES

Polypropylene Slip Stopper / Set of 4



STOPPER FOR PP STORAGE 4PCS / SET

Size: SMALL 3/4" h **\$ 4.75**

LARGE 1" h

JAN# SMALL 47554908 / LARGE 47554892

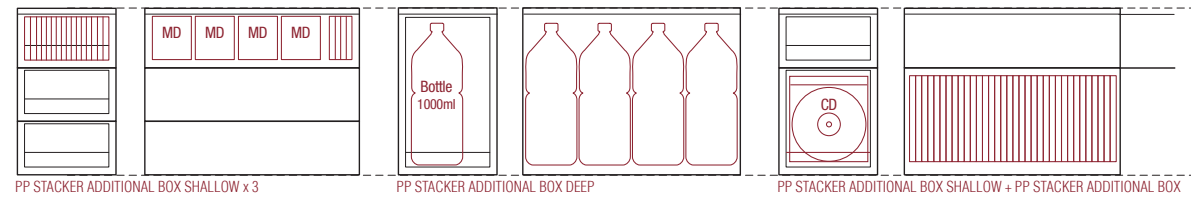
ITEMS CAN BE USED WITH THE SMALL STOPPERS:

- PP CARRYING BOX DEEP, LARGE & SMALL
- PP CARRYING BOX WITH LOCK DEEP, LARGE & SMALL
- PP STORAGE SET - ALL TYPES
- PP TRASH BIN FOR SORTING TRASH LARGE & SMALL - 45L
- PP TRASH BIN
- PP CASE WITH DRAWERS - ALL TYPES
- PP WAGON STORAGE WITH CASTERS LARGE & SMALL
- PP LAUNDRY BASKET
- PP DOCUMENT CASE - ALL TYPES

ITEMS CAN BE USED WITH THE LARGE STOPPERS:

- PP CARRYING BOX DEEP, LARGE & SMALL
- PP STORAGE DRAWER WIDE DEEP, LARGE & SMALL
- PP CLOTHING DRAWERS DEEP, LARGE & SMALL
- PP CLOSET CASE WITH DRAWERS DEEP, LARGE & SMALL

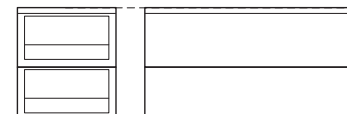
POLYPROPYLENE STACKER SIZE MODULE



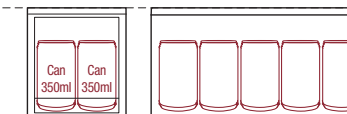
PP STACKER ADDITIONAL BOX SHALLOW x 3

PP STACKER ADDITIONAL BOX DEEP

PP STACKER ADDITIONAL BOX SHALLOW + PP STACKER ADDITIONAL BOX



PP STACKER ADDITIONAL BOX SHALLOW x 2



PP STACKER ADDITIONAL BOX

Polypropylene Storage Box / Wide



PP STORAGE DRAWER WIDE / SMALL
 Size: 21.5" w x 17.5" d x 6.8" h **\$ 32.50**
 Maximum load: 6.6 lb
 Maximum stacking: 5
 JAN# 47266733 / 76331490



PP STORAGE DRAWER WIDE / LARGE
 Size: 21.5" w x 17.5" d x 9" h **\$ 35.50**
 Maximum load: 6.6 lb
 Maximum stacking: 5
 JAN# 47266740 / 76331483



PP STORAGE DRAWER WIDE / DEEP
 Size: 21.5" w x 17.5" d x 11.5" h **\$ 36.50**
 Maximum load: 5.5 lb
 Maximum stacking: 4
 JAN# 18182800 / 76331476

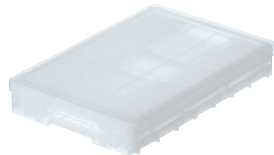
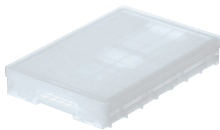
Polypropylene Carry Box Foldable



PP FOLDABLE CARRY BOX / SMALL
 Size: 14.1" w x 10.1" d x 6.6" h **\$ 18.00**
 Maximum load: 11 lb
 Maximum stacking: 8
 JAN# 47686708



PP FOLDABLE CARRY BOX / LARGE
 Size: 14.1" w x 20.1" d x 9.6" h **\$ 26.00**
 Maximum load: 15 lb
 Maximum stacking: 8
 JAN# 47686715



Storage box that can be folded for easy carrying and portability. Able to stack up to eight boxes in each size.

Polypropylene Carry Box



PP CARRYING BOX / SMALL
 Size: 9.8" w x 14" d x 6.5" h **\$ 9.00**
 Maximum load: 11 lb
 Maximum stacking: 8
 JAN# 47686685



PP CARRYING BOX / LARGE
 Size: 14" w x 20" d x 6.5" h **\$ 13.00**
 Maximum load: 15.4 lb
 Maximum stacking: 8
 JAN# 47686692



PP CARRYING BOX / DEEP
 Size: 14" w x 20" d x 12.8" h **\$ 18.00**
 Maximum load: 19.8 lb
 Maximum stacking: 5
 JAN# 47807493

Polypropylene Storage Carry Box With Lock



PP CARRYING BOX WITH LOCK / SMALL
 Size: 9.8" w x 14.5" d x 6.5" h **\$ 12.00**
 Maximum load: 15.4 lb
 Maximum stacking: 8
 JAN# 18723676



PP CARRYING BOX WITH LOCK / LARGE
 Size: 14" w x 20.5" d x 6.5" h **\$ 16.00**
 Maximum load: 15.4 lb
 Maximum stacking: 8
 JAN# 18723690



PP CARRYING BOX WITH LOCK / DEEP
 Size: 14" w x 20.5" d x 12.8" h **\$ 20.00**
 Maximum load: 19.8 lb
 Maximum stacking: 5
 JAN# 18723713



PP CARRYING BOX WITH LOCK / SMALL / FLAT
 Size: 9.8" w x 14.5" d x 5.7" h **\$ 9.00**
 Maximum load: 8 lb
 Maximum stacking: 14
 JAN# 61793016



PP CARRYING BOX WITH LOCK / SMALL / DEEP
 Size: 9.8" w x 14.5" d x 12.8" h **\$ 15.00**
 Maximum load: 17 lb
 Maximum stacking: 5
 JAN# 61793030

