



# Furniture Catalog



## DELIVERY FEES

First 3 items	\$ 90
4th item and thereafter	\$ 30 / item

## DELIVERY AREA

Most products in this leaflet can be delivered to limited areas in California. No weekend deliveries. We apologize for any inconveniences. Please ask our staff for more details.

## REGARDING LARGE PACKAGE (FOR BED FRAME AND MATTRESS)

Please check the EXAMPLE OF LARGE PACKAGE SIZE to see if the package can go through places such as hallways, stairways, and doorways, before purchasing the item. Please check the beams, lighting fixtures on the ceiling and other furniture in places where the item will be brought through. Our store still charges for the delivery fee in the event that package doesn't go through the passage and the item is returned to the store.

### EXAMPLE OF LARGE PACKAGE SIZE

POCKET COIL MATTRESS WITH LEGS SINGLE SIZE	39.4" w x 78.3" d x 12.2" h
POCKET COIL MATTRESS WITH LEGS DOUBLE SIZE	55.9" w x 78.3" d x 12.2" h
POCKET COIL SPRING MATTRESS DOUBLE SIZE	63.4" w x 77.2" d x 7.9" h

## RETURN / EXCHANGE POLICY

- Merchandise may be returned or exchanged at the store where it was purchased within 30 days of purchase with a receipt.
- The returned merchandise must be in new and unused condition, and in the original packaging. No returns, refunds, exchanges, or credits will be issued without a receipt. Refunds will be issued in the original tender for the price paid. For purchase by traveler's check, cash back will be given.
- Non-returnable merchandise include but are not limited to the following: Personal care/use, table/kitchenware, health and beauty, bedding and underwear.
- Return/Exchange merchandise must be in the original condition with the original package and tags.
- Clothing that is unworn with tags and receipt can be returned and exchanged.
- MUJI reserves the right to deny any return/exchange based on the condition of the merchandise.
- Shipping charges are not refunded.
- No RETURNS on sale items.

## STORE

**MUJI SOMA**  
540 9th Street  
San Francisco, CA 94103  
tel: 415.694.5981

**MUJI SAN JOSE**  
170 S. Market Street, Suite 120  
San Jose, CA 95113  
tel: 408.200.7818

**MUJI HOLLYWOOD**  
7021 Hollywood Boulevard  
Los Angeles, CA 90028  
tel: 323.785.2013

**MUJI SANTA MONICA**  
2936 Main Street  
Santa Monica, CA 90405  
tel: 310.566.8345

**MUJI STANFORD**  
850 Stanford Shopping Center  
Palo Alto, CA 94304  
tel: 650.433.3256

**MUJI SANTA ANITA**  
400 S. Baldwin Ave  
Arcadia, CA 91007  
tel: 626.461.0150

© 2017 MUJI U.S.A. LIMITED All Rights Reserved

All product and price information may be subject to change. Any dimensions quoted are for guidance only. Prices and product details should be checked at one of our USA stores before making or requesting any purchases. All products are subject to availability.

[www.muji.com/us](http://www.muji.com/us)



# Pocket Coil Mattress with Legs

## POCKET COIL MATTRESS WITH LEGS



The double cushioning effect of the mattress and the wood springs helps reduce the load on the back and hips. Use it as a sofa or as a bed, the decision is yours.

## POCKET COIL MATTRESS WITH LEGS

SINGLE SIZE W 38.5" x D 77.9" x H 10.2"

**\$ 399.00**

Packaged: W 38.5" x D 78.3" x H 10.6"

Weight: 79lbs. Number of springs: 510

JAN# 38363521

DOUBLE SIZE W 55.1" x D 77.9" x H 10.2"

**\$ 599.00**

Packaged: W 55.9" x D 78.3" x H 10.6"

Weight: 108lbs. Number of springs: 720

JAN# 38363545

\*Legs come in different sizes and colors. Please ask a store staff for more information  
Legs - H10.2": Brown 15296989 / Natural 15296972

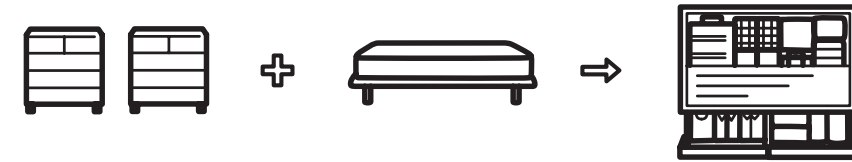
\*\* Ventilate the mattress as needed to avoid the growth of mold.

\*\* Please check the box size of this item to make sure that the package will fit through stairwells and doorways.





## STORAGE BED



### Bed + Storage

MUJI renewed its under-bed storage for a more efficient use of the room. The bed provides a larger storage space by adopting a structural design in which the mattress is supported by the storage boxes themselves.



[Top View]



Under the bed board  
\* Bed board is not provided under the open space.

Open space  
A storage space is also provided behind the drawer space. In the open space under the double, you can store long or large objects, such as rugs, skis, comforters, and travel bags.  
Inside dimensions of open space:  
W 74.4" x H 9.2" (single) W 73.2" x H 9.2" (double)  
W 72.8" x H 7.2" (queen)  
Depth: single - 15.7" double - 33"  
queen - 39.8"

Size	Colors	Bed Frame	Mattress	SPECIAL PRICE Bed Frame + Mattress	Headboard	Additional Box
Single W 41.5" x D 41.5" x H 10.6" Weight: Approx. 154 lbs	Oak	37407947 <b>\$550.00</b>	<b>\$480.00</b>	<b>Save \$100</b> \$1,030.00 → <b>\$930.00</b>	37497849 <b>\$120.00</b>	37416659 <b>\$100.00</b>
	Walnut	37407985 <b>\$580.00</b>		<b>Save \$100</b> \$1,060.00 → <b>\$960.00</b>	37497887 <b>\$150.00</b>	37416925 <b>\$120.00</b>
Double W 79.1" x D 58.4" x H 10.6" Weight: Approx. 174 lbs	Oak	37407961 <b>\$650.00</b>	<b>\$580.00</b>	<b>Save \$120</b> \$1,230.00 → <b>\$1,110.00</b>	37497863 <b>\$150.00</b>	37416673 <b>\$120.00</b>
	Walnut	37408005 <b>\$680.00</b>		<b>Save \$120</b> \$1,260.00 → <b>\$1,140.00</b>	37497900 <b>\$180.00</b>	37416949 <b>\$150.00</b>
Queen W 79.1" x D 66.3" x H 10.6" Weight: Approx. 190 lbs	Oak	38371229 <b>\$690.00</b>	<b>\$680.00</b>	<b>Save \$150</b> \$1370.00 → <b>\$1,220.00</b>	38371304 <b>\$230.00</b>	38371267 <b>\$150.00</b>

# Storage Bed





# Body Fit Cushion

## BODY FIT CUSHION



### BODY FIT CUSHION

BODY 21.65" w x 21.65" d x 14.96" h

**\$ 150.00**

COVER 21.65" w x 21.65" d x 14.96" h

**\$ 40.00**

(Gray Beige, Dark Brown, Charcoal Gray, Navy)

Its squared off shape offers greater support by keeping cushioning where it's needed most. Microbead filling offers a high degree of softness and support. The small beads also resist crushing over time to offer durability. Removable and washable.

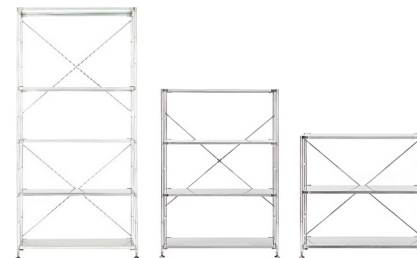
\*Body Fit Cushion cover is SOLD SEPERATELY

JAN# BODY: 37244955 COVER: GRAY BEIGE 37244979 / DARK BROWN 37244962  
CHARCOAL GRAY 37461468 / NAVY 37353787



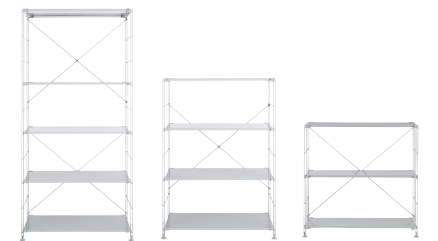


## STEEL SHELVING UNITS



### SUS STAINLESS SHELVING UNIT

1. 61179063	LARGE	33.9" w x 16.2" d x 69.1" h	<b>\$ 525.95</b>
2. 61179070	MEDIUM	33.9" w x 16.2" d x 47.2" h	<b>\$ 425.95</b>
3. 61179087	SMALL	33.9" w x 16.2" d x 32.7" h	<b>\$ 325.95</b>



### SUS STEEL SHELVING UNIT - GRAY

1. 61179353	L NARROW	22.8" w x 16.2" d x 69.1" h	<b>\$ 159.00</b>
2. 61179360	M NARROW	22.8" w x 16.2" d x 47.2" h	<b>\$ 109.00</b>
3. 61179377	S NARROW	22.8" w x 16.2" d x 32.7" h	<b>\$ 89.00</b>
4. 61179391	LARGE	33.9" w x 16.2" d x 69.1" h	<b>\$ 197.95</b>
5. 61179407	MEDIUM	33.9" w x 16.2" d x 47.2" h	<b>\$ 177.95</b>
6. 61179414	SMALL	33.9" w x 16.2" d x 32.7" h	<b>\$ 157.95</b>

Maximum carrying capacity:  
 LARGE up to 220 lbs. / MEDIUM up to 165 lbs. / SMALL up to 110 lbs.  
 \* Each Shelf board: 66 lbs.

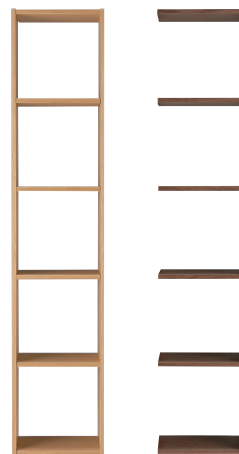
# Steel Shelving Unit





## STACKING SHELF

Can be arranged vertically or horizontally according to your purpose. These open cube shelves can be used as storage, book shelves, and room divider.



### STACKING SHELF 5 ROW

Size: 16.5" w x 11.2" d x 78.7" h

OAK \$ 310.25  
WALNUT \$ 320.25

OAK 18121335 / WALNUT 18218615/37265646

### ADDITIONAL SHELF 5 ROW

Size: 15.7" w x 11.2" d x 78.7" h

OAK \$ 259.25  
WALNUT \$ 289.75

OAK 18121373 / WALNUT 18218646/37265677



### STACKING SHELF 3 ROW

Size: 16.5" w x 11.2" d x 47.5" h

OAK \$ 239.95  
WALNUT \$ 259.25

OAK 18121328 / WALNUT 18218608/37265639

### ADDITIONAL SHELF 3 ROW

Size: 15.7" w x 11.2" d x 47.5" h

OAK \$ 219.95  
WALNUT \$ 243.95

OAK 18121366 / WALNUT 18218639/37265660



### STACKING SHELF 2 ROW

Size: 16.5" w x 11.2" d x 32" h

OAK \$ 189.95  
WALNUT \$ 213.50

OAK 18121311 / WALNUT 18218592/37265622

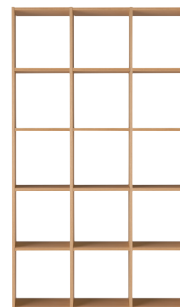
### ADDITIONAL SHELF 2 ROW

Size: 15.7" w x 11.2" d x 32" h

OAK \$ 167.95  
WALNUT \$ 198.25

OAK 18121359 / WALNUT 18218622/37265653

## STACKING SHELF SETS

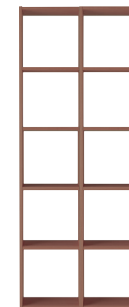


### STACKING SHELF / 5 SHELVES 3 COMPARTMENTS

Size: 48.03" w x 11.22" d x 78.74" h

OAK \$ 750.75  
WALNUT \$ 820.75

OAK 37263611 / WALNUT 37267053



### STACKING SHELF / 5 SHELVES 2 COMPARTMENTS

Size: 32.28" w x 11.22" d x 78.74" h

OAK \$ 520.75  
WALNUT \$ 610.00

OAK 37263628 / WALNUT 37267060



### STACKING SHELF / 3 SHELVES 3 COMPARTMENTS

Size: 48.03" w x 11.22" d x 47.63" h

OAK \$ 620.75  
WALNUT \$ 680.75

OAK 37263635 / WALNUT 37267077



### STACKING SHELF / 3 SHELVES 2 COMPARTMENTS

Size: 32.28" w x 11.22" d x 47.63" h

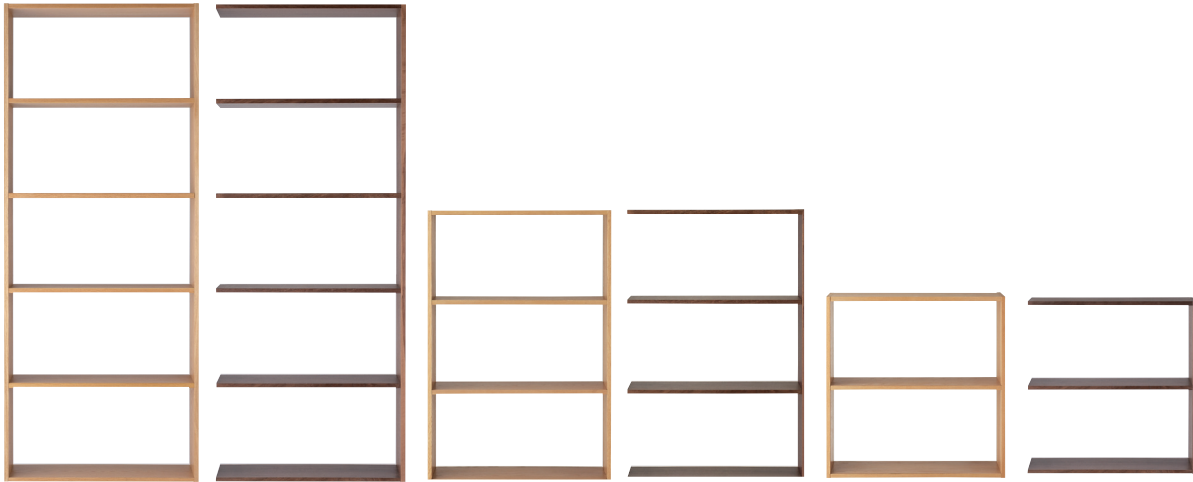
OAK \$ 420.75  
WALNUT \$ 460.75

OAK 37263970 / WALNUT 37267084

# Stacking Shelf



# STACKING SHELF



## STACKING SHELF 5 ROW WIDE

Size: 32.06" w x 11.2" d x 78.7" h

**OAK** \$ 420.75  
**WALNUT** \$ 470.75

OAK 18340057 / WALNUT 18340026/37265707

## ADDITIONAL SHELF 5 ROW WIDE

Size: 31.3" w x 11.2" d x 78.7" h

**OAK** \$ 390.75  
**WALNUT** \$ 429.75

OAK 18482887 / WALNUT 18482870/37265738

## STACKING SHELF 3 ROW WIDE

Size: 32.06" w x 11.2" d x 47.5" h

**OAK** \$ 320.75  
**WALNUT** \$ 340.75

OAK 18340040 / WALNUT 18340019/37265691

## ADDITIONAL SHELF 3 ROW WIDE

Size: 31.3" w x 11.2" d x 47.5" h

**OAK** \$ 290.75  
**WALNUT** \$ 320.75

OAK 18482863 / WALNUT 18482856/37265721

## STACKING SHELF 2 ROW WIDE

Size: 32.06" w x 11.2" d x 32" h

**OAK** \$ 250.75  
**WALNUT** \$ 270.75

OAK 18340033/37263215 / WALNUT 18340002/37265684

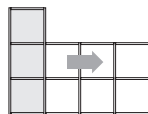
## ADDITIONAL SHELF 2 ROW WIDE

Size: 31.3" w x 11.2" d x 32" h

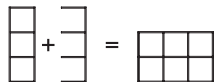
**OAK** \$ 230.75  
**WALNUT** \$ 274.75

OAK 18482849 / WALNUT 18482832/37265714

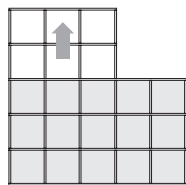
## COMBINATION EXAMPLES



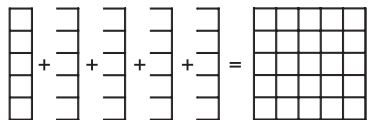
■ 3 row-basic unit x 1 + 3-row add-on unit x 1



Place the basic unit horizontally and add up upward.  
Max. load: total 88 lbs = 88 lbs x 2 units ÷ 2



■ 5 row-basic unit x 1 + 5-row add-on unit x 4



Place the basic unit vertically and add on sideways.  
Max. load: total 330 lbs = 132 lbs x 5 units ÷ 2



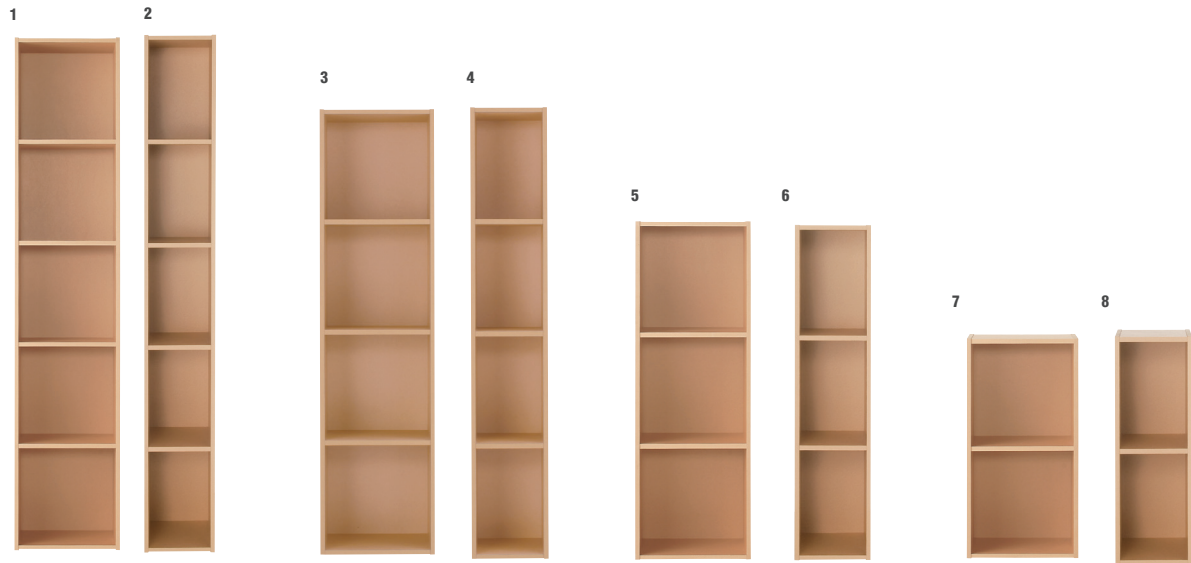
# Pulp Board Boxes

The formula for calculating the max. load when units are connected:

Total max. load = Max. load/per unit x number of units ÷ 2



# PULP BOARD BOXES



**1. PULP BOARD BOX A4 2-SIDE 5ROW**

Size : 14.8" w x 11.4" d x 70.9" h  
 Maximum carrying capacity per shelf is 33 lbs.  
 Total carrying capacity of unit is 88 lbs.  
 JAN# 47549201  
**\$ 61.25 → \$ 49.00**

**4. PULP BOARD BOX SLIM 4ROW**

Size : 9.8" w x 11.4" d x 56.7" h  
 Maximum carrying capacity per shelf is 30 lbs.  
 Total carrying capacity of unit is 77 lbs.  
 JAN# 18511358  
**\$ 48.50 → \$ 39.00**

**7. PULP BOARD BOX A4 2-SIDE 2ROW**

Size : 14.8" w x 11.4" d x 28.7" h  
 Maximum carrying capacity per shelf is 33 lbs.  
 Total carrying capacity of unit is 44 lbs.  
 JAN# 47549188  
**\$ 29.95 → \$ 25.00**

**9. PULP BOARD BOX MULTI RACK**

Size : 14.5" w x 6.9" d x 42.9" h  
 Maximum carrying capacity per shelf is 17.6 lbs.  
 Total carrying capacity of unit is 55 lbs.  
 JAN# 18121724  
**\$ 51.25 → \$ 39.00**

**2. PULP BOARD BOX SLIM 5ROW**

Size : 9.8" w x 11.4" d x 70.9" h  
 Maximum carrying capacity per shelf is 33 lbs.  
 Total carrying capacity of unit is 88 lbs.  
 JAN# 18121717  
**\$ 58.50 → \$ 45.00**

**5. PULP BOARD BOX A4 2-SIDE 3ROW**

Size : 14.5" w x 11.4" d x 42.9" h  
 Maximum carrying capacity per shelf is 30 lbs.  
 Total carrying capacity of unit is 55 lbs.  
 JAN# 47549195  
**\$ 39.25 → \$ 35.00**

**8. PULP BOARD BOX SLIM 2ROW**

Size : 9.8" w x 11.4" d x 28.7" h  
 Maximum carrying capacity per shelf is 33 lbs.  
 Total carrying capacity of unit is 44 lbs.  
 JAN# 18121694  
**\$ 28.50 → \$ 19.00**

**10. PULP BOARD BOX FREE RACK**

Size : 9.8" w x 11.4" d x 42.9" h  
 Maximum carrying capacity per shelf is 17.6 lbs.  
 Total carrying capacity of unit is 55 lbs.  
 JAN# 18121731  
**\$ 44.95 → \$ 35.00**

**3. PULP BOARD BOX A4 2-SIDE 4ROW**

Size : 14.5" w x 11.4" d x 56.7" h  
 Maximum carrying capacity per shelf is 30 lbs.  
 Total carrying capacity of unit is 77 lbs.  
 JAN# 18511341  
**\$ 51.25 → \$ 45.00**

**6. PULP BOARD BOX SLIM 3ROW**

Size : 9.8" w x 11.4" d x 42.9" h  
 Maximum carrying capacity per shelf is 30 lbs.  
 Total carrying capacity of unit is 55 lbs.  
 JAN# 18121700  
**\$ 38.50 → \$ 29.00**



# PULP BOARD BOXES



**11. PULP BOARD BOX WITH CASTER**

Size : 17.4" w (incl. handle) x 11.4" d x 31" h (Horizontal)  
 Size : 29.9" w (incl. handle) x 11.4" d x 25.2" h (Vertical)  
 Maximum carrying capacity per shelf is 30 lbs.  
 Total carrying capacity of unit is 44 lbs.  
 JAN# 61789712  
**\$ 89.95 → \$ 59.00**



**12. CARDBOARD BOX 1DRAWER**

Size : 13.4" w x 10.6" d x 13.4" h  
 Modulated to be used with PULP BOARD BOX A4 2-SIDE.



JAN# 76370888  
**\$ 12.50**



**13. CARDBOARD BOX 2DRAWER**

Size : 13.4" w x 10.6" d x 13.4" h  
 Modulated to be used with PULP BOARD BOX A4 2-SIDE.

JAN# 76249276  
**\$ 23.50**

## PULP BOARD BOX JOINT PARTS FOR 2-SIDE (#1,2) and MULTI RACK (#4)



2pcs/set

JAN# 18960941

**\$ 3.95**





## DESKS



### PINEWOOD FOLDING TABLE - SMALL

SMALL 31.5" w x 19.7" d x 13.8" h

**\$ 62.75**

With beautiful grain and natural warm texture. Table also folds, allowing you to store it away and save space.

JAN# Small 18499434



### PINEWOOD FOLDING TABLE - LARGE

LARGE 31.5" w x 19.7" d x 27.5" h

**\$ 82.25**

With beautiful grain and natural warm texture. Table also folds, allowing you to store it away and save space.

JAN# Large 18499441

## SIDE FURNITURE



### BEECH COAT STAND

18.8" w x 16.5" d x 68.3" h

**\$ 109.75**

JAN# 61013107

## SOLID WOOD FURNITURE



### OAK BENCH S

15892365 17.7" w x 11.8" d x 17.3" h

**\$ 129.50**



### OAK BENCH L

15892358 39.3" w x 11.8" d x 17.3" h

**\$ 159.50**



# CHAIRS



## BEECH WOOD FOLDING CHAIR PLYWOOD SEAT

18.1" w x 20.5" d x 31.9" h

~~\$ 79.75~~ → **\$ 39.88**

Foldable. Features a molded plywood seat.

\* Do not stand on chair.

\* This item can be delivered, we will charge general delivery fee.

JAN# 47178456



## OAK PAPERCORD CHAIR

22" w x 18.7" d x 28.4" h

**\$ 420.00**

Features a papercord material seat. Frame is designed to fit the body.

\* Do not stand on chair.

\* This item can be delivered, we will charge general delivery fee.

JAN# 15256433



## OAK ARM CHAIR WITH ROUND LEGS

21.6" w x 12.6" d x 29.2" h

~~\$ 490.00~~ → **\$ 245.00**

\*MUJI Fifth Avenue Exclusive

\* Do not stand on chair.

\* This item can be delivered, we will charge general delivery fee.

JAN# 15902040



## RESIN STEEL CHAIR

18.9" w x 19.7" d x 32.3" h

~~\$ 121.50~~ → **\$ 60.75**

Available in Light-gray and Black  
Polypropylene resin seat with convenient stack and store function.  
Light weight with strong steel frame.

\* Do not stand on chair.

\* This item cannot be delivered.

JAN# Dark Grey 15382309



## WORKING CHAIR

21.8" w x 20.8" d x 29.1~33.1" h

~~\$ 197.75~~ → **\$ 98.88**

Office Chair Arms 2pcs

~~\$ 34.75~~ → **\$ 17.00**

Adjustable.

\* Do not stand on chair.

\* This item can be delivered, we will charge general delivery fee.

JAN# Gray 18121298 / Gray Chair Arms 18121861 /





# Polypropylene Storage Units

## POLYPROPYLENE STORAGE UNITS

Made of translucent polypropylene material. This storage system has a simple design and can accommodate various storage items. It can be placed in the closet, or be displayed as freestanding piece.

### Polypropylene Storage Box



**PP STORAGE DRAWER / SMALL**  
 Size: 13.3" w x 17.5" d x 6.8" h **\$ 18.50**  
 Maximum load: 11 lb  
 Maximum stacking: 8  
 JAN# 15199686 / 18816170



**PP STORAGE DRAWER / LARGE**  
 Size: 13.3" w x 17.5" d x 9" h **\$ 19.50**  
 Maximum load: 11 lb  
 Maximum stacking: 7  
 JAN# 15527021 / 18816163



**PP STORAGE DRAWER / DEEP**  
 Size: 13.3" w x 17.5" d x 11.5" h **\$ 21.50**  
 Maximum load: 11 lb  
 Maximum stacking: 6  
 JAN# 15237005 / 18816156



**PP CLOTHING DRAWER / SMALL**  
 Size: 15.5" w x 25.5" d x 6.8" h **\$ 23.50**  
 Maximum load: 15.4 lb  
 Maximum stacking: 8  
 JAN# 15112104



**PP CLOTHING DRAWER / LARGE**  
 Size: 15.5" w x 25.5" d x 9" h **\$ 25.50**  
 Maximum load: 15.4 lb  
 Maximum stacking: 8  
 JAN# 15112098



**PP CLOTHING DRAWER / DEEP**  
 Size: 15.5" w x 25.5" d x 11.5" h **\$ 29.50**  
 Maximum load: 15.4 lb  
 Maximum stacking: 6  
 JAN# 15112081



**PP CLOSET CASE WITH DRAWER / SMALL**  
 Size: 17.3" w x 21.5" d x 6.8" h **\$ 23.50**  
 Maximum load: 15.4 lb  
 Maximum stacking: 8  
 JAN# 15236640



**PP CLOSET CASE WITH DRAWER / LARGE**  
 Size: 17.3" w x 21.5" d x 9" h **\$ 25.50**  
 Maximum load: 15.4 lb  
 Maximum stacking: 7  
 JAN# 15199709



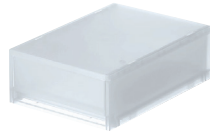


## Polypropylene Storage Case



### PP CASE WITH 2 DRAWERS

Size: 10.2" w x 14.5" d x 4.5" h **\$ 22.50**  
 Maximum load: 3.3 lb  
 Maximum stacking: 10  
 JAN# 76748984



### PP CASE WITH DRAWER

Size: 10.2" w x 14.5" d x 4.5" h **\$ 15.50**  
 Maximum load: 6.6 lb  
 Maximum stacking: 10  
 JAN# 76748977



### PP CASE WITH DRAWER / DEEP

Size: 10.2" w x 14.5" d x 6.9" h **\$ 18.50**  
 Maximum load: 8.9 lb / Can store 22 DVDs.  
 Maximum stacking: 6  
 JAN# 76749011

## Polypropylene Additional Drawer



### ADDITIONAL PP STORAGE / SHALLOW

Size: 7" w x 15.7" d x 32.7" h **\$ 11.50**  
 Maximum stacking: 10  
 JAN# 15880171



### ADDITIONAL PP STORAGE

Size: 7" w x 15.7" d x 32.7" h **\$ 13.50**  
 Maximum load: 4.4lb  
 Maximum stacking: 5  
 JAN# 47721584

\*This item can be combined with PP STACKING DRAWER HALF and PP STACKING ADDITIONAL BOX DEEP.

\*This Item cannot be disassembled once put together.



### ADDITIONAL PP STORAGE / DEEP

Size: 7" w x 15.7" d x 12" h **\$ 17.50**  
 Maximum stacking: 4  
 JAN# 15880164

## Polypropylene Storage Case / Extra Shallow



### PP CASE WITH DRAWER SHALLOW / SLIM

Size: 5.2" w x 14.5" d x 4.5" h **\$ 12.50**  
 Maximum load: 4.4 lb  
 Maximum stacking: 6  
 JAN# 76749042



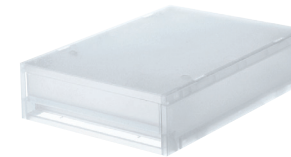
### PP CASE WITH DRAWER DEEP / SLIM

Size: 5.2" w x 14.5" d x 7" h **\$ 16.50**  
 Maximum load: 4.4 lb  
 Maximum stacking: 4 / Can store 20 CDs.  
 JAN# 76749035



### PP CASE WITH 2 DRAWERS / DEEP

Size: 10.2" w x 14.5" d x 6.9" h **\$ 28.50**  
 Maximum load: 4.4 lb / Can store 44 CDs.  
 Maximum stacking: 6  
 JAN# 76749028



### PP CASE WITH 1 DRAWER / FLAT

Size: 10.2" w x 14.6" d x 3.5" h **\$ 13.50**  
 Maximum load: 4.4lb  
 Maximum stacking: 13  
 JAN# 76749066



### PP CASE WITH 2 DRAWERS / FLAT

Size: 10.2" w x 14.6" d x 6.5" h **\$ 22.50**  
 Maximum load: 4.4lb  
 Maximum stacking: 7  
 JAN# 76749073



### PP CASE WITH 3 DRAWERS

Size: 10.2" w x 14.5" d x 12.5" h **\$ 34.50**  
 Maximum load: 6.6 lb  
 Maximum stacking: 3  
 JAN# 76748991



### PP CASE WITH 6 DRAWERS

Size: 10.2" w x 14.5" d x 12.5" h **\$ 53.50**  
 Maximum load: 3.3 lb  
 Maximum stacking: 3  
 JAN# 76749004



## Polypropylene Storage Stocker



### PP STORAGE SET WITH CASTERS 1

Size: 7" w x 15.7" d x 32.7" h **\$ 49.50**

Inside dimensions: (Drawer) approx. 5.1" w x 14" d x 6.7" h  
(Deep drawers) approx. 4.9" w x 13.8" d x 10.4" h

Polypropylene (uncolored)

JAN# 15880188

\*This item can be combined with PP ADDITIONAL STORAGE



### PP STORAGE SET WITH CASTERS 2

Size: 7" w x 15.7" d x 32.7" h **\$ 57.50**

Inside dimensions: (Drawer) approx. 5.1" w x 14" d x 6.7" h  
(Deep drawers) approx. 4.9" w x 13.8" d x 10.4" h  
(Shallow drawers) approx. 5.1" w x 14.2" d x 2.8" h

Polypropylene (uncolored)

JAN# 15880195

\*This item can be combined with PP ADDITIONAL STORAGE.



### PP STORAGE SET WITH CASTERS 3

Size: 7" w x 15.7" d x 48" h **\$ 73.50**

Inside dimensions: (Drawer) approx. 5.1" w x 13.9" d x 6.7" h  
(Deep drawers) approx. 4.9" w x 13.8" d x 10.4" h  
(Shallow drawers) approx. 5.1" w x 14.1" d x 2.8" h

Polypropylene (uncolored)

JAN# 15880201

\*Cannot be disassembled.



### PP STORAGE SET WITH CASTERS 4

Size: 7" w x 15.7" d x 48" h **\$ 77.50**

Inside dimensions: (Drawer) approx. 5.1" w x 13.9" d x 6.7" h  
(Deep drawers) approx. 4.9" w x 13.8" d x 10.4" h  
(Shallow drawers) approx. 5.1" w x 14.2" d x 2.8" h

Polypropylene (uncolored)

JAN# 15880218

\* Cannot be disassembled.



### 4 STORAGE SET WITH CASTERS

Size: 7" w x 15.7" d x 32.7" h **\$ 44.50**

Inside dimensions: (Drawer) approx. 5.1" w x 13.9" d x 6.7" h  
(Deep drawers) approx. 4.9" w x 13.9" d x 6.7" h

Polypropylene (uncolored)

JAN# 15521821

\*This item can be combined with PP ADDITIONAL STACKING RACK.

## Polypropylene Storage Caster



### CASTER FOR PP STORAGE

Size: 1.5 - 1.7" h (4pc/set) **\$ 5.75**

JAN# 15523788

### ITEMS CAN BE USED WITH THE CASTERS:

- PP CARRYING BOX DEEP, LARGE & SMALL
- PP CARRYING BOX WITH LOCK DEEP, LARGE & SMALL
- PP FOLDING CARRYING BOX LARGE
- PP STORAGE DRAWER DEEP, LARGE & SMALL
- PP STORAGE DRAWER WIDE DEEP, LARGE & SMALL
- PP CLOTHING DRAWERS DEEP, LARGE & SMALL
- PP CLOSET CASE WITH DRAWERS DEEP, LARGE & SMALL
- PP STORAGE SET - ALL TYPES
- MDF STORAGE BOX, DRAWER TYPE SHALLOW 6 ROWS W/ CASTER
- MDF STORAGE BOX, DRAWER TYPE DEE 4 ROWS W/ CASTER
- PP TRASH BIN FOR SORTING TRASH LARGE & SMALL - 45L
- PP TRASH BIN
- PP CASE WITH DRAWERS - ALL TYPES
- PP WAGON STORAGE WITH CASTERS LARGE & SMALL
- PP LAUNDRY BASKET
- PP DOCUMENT CASE - ALL TYPES

## Polypropylene Slip Stopper / Set of 4



### STOPPER FOR PP STORAGE 4PCS / SET

Size: SMALL 3/4" h **\$ 4.75**

LARGE 1" h

JAN# SMALL 47554908 / LARGE 47554892

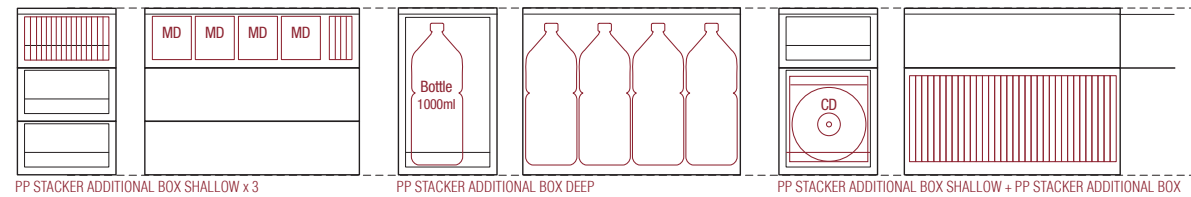
### ITEMS CAN BE USED WITH THE SMALL STOPPERS:

- PP CARRYING BOX DEEP, LARGE & SMALL
- PP CARRYING BOX WITH LOCK DEEP, LARGE & SMALL
- PP STORAGE SET - ALL TYPES
- PP TRASH BIN FOR SORTING TRASH LARGE & SMALL - 45L
- PP TRASH BIN
- PP CASE WITH DRAWERS - ALL TYPES
- PP WAGON STORAGE WITH CASTERS LARGE & SMALL
- PP LAUNDRY BASKET
- PP DOCUMENT CASE - ALL TYPES

### ITEMS CAN BE USED WITH THE LARGE STOPPERS:

- PP CARRYING BOX DEEP, LARGE & SMALL
- PP STORAGE DRAWER WIDE DEEP, LARGE & SMALL
- PP CLOTHING DRAWERS DEEP, LARGE & SMALL
- PP CLOSET CASE WITH DRAWERS DEEP, LARGE & SMALL

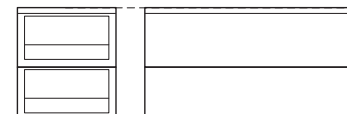
## POLYPROPYLENE STACKER SIZE MODULE



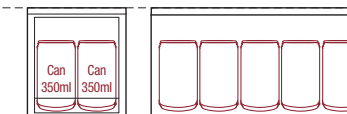
PP STACKER ADDITIONAL BOX SHALLOW x 3

PP STACKER ADDITIONAL BOX DEEP

PP STACKER ADDITIONAL BOX SHALLOW + PP STACKER ADDITIONAL BOX



PP STACKER ADDITIONAL BOX SHALLOW x 2



PP STACKER ADDITIONAL BOX



## Polypropylene Storage Box / Wide



**PP STORAGE DRAWER WIDE / SMALL**  
 Size: 21.5" w x 17.5" d x 6.8" h **\$ 32.50**  
 Maximum load: 6.6 lb  
 Maximum stacking: 5  
 JAN# 47266733 / 76331490

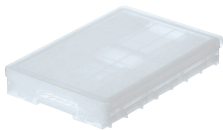


**PP STORAGE DRAWER WIDE / LARGE**  
 Size: 21.5" w x 17.5" d x 9" h **\$ 35.50**  
 Maximum load: 6.6 lb  
 Maximum stacking: 5  
 JAN# 47266740 / 76331483

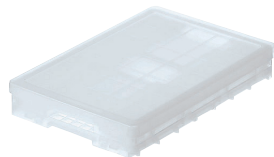


**PP STORAGE DRAWER WIDE / DEEP**  
 Size: 21.5" w x 17.5" d x 11.5" h **\$ 36.50**  
 Maximum load: 5.5 lb  
 Maximum stacking: 4  
 JAN# 18182800 / 76331476

## Polypropylene Carry Box Foldable



**PP FOLDABLE CARRY BOX / SMALL**  
 Size: 14.1" w x 10.1" d x 6.6" h **\$ 18.00**  
 Maximum load: 11 lb  
 Maximum stacking: 8  
 JAN# 47686708



**PP FOLDABLE CARRY BOX / LARGE**  
 Size: 14.1" w x 20.1" d x 9.6" h **\$ 26.00**  
 Maximum load: 15 lb  
 Maximum stacking: 8  
 JAN# 47686715

Storage box that can be folded for easy carrying and portability. Able to stack up to eight boxes in each size.

## Polypropylene Carry Box



**PP CARRYING BOX / SMALL**  
 Size: 9.8" w x 14" d x 6.5" h **\$ 9.00**  
 Maximum load: 11 lb  
 Maximum stacking: 8  
 JAN# 47686685



**PP CARRYING BOX / LARGE**  
 Size: 14" w x 20" d x 6.5" h **\$ 13.00**  
 Maximum load: 15.4 lb  
 Maximum stacking: 8  
 JAN# 47686692



**PP CARRYING BOX / DEEP**  
 Size: 14" w x 20" d x 12.8" h **\$ 18.00**  
 Maximum load: 19.8 lb  
 Maximum stacking: 5  
 JAN# 47807493

## Polypropylene Storage Carry Box With Lock



**PP CARRYING BOX WITH LOCK / SMALL**  
 Size: 9.8" w x 14.5" d x 6.5" h **\$ 12.00**  
 Maximum load: 15.4 lb  
 Maximum stacking: 8  
 JAN# 18723676



**PP CARRYING BOX WITH LOCK / LARGE**  
 Size: 14" w x 20.5" d x 6.5" h **\$ 16.00**  
 Maximum load: 15.4 lb  
 Maximum stacking: 8  
 JAN# 18723690



**PP CARRYING BOX WITH LOCK / DEEP**  
 Size: 14" w x 20.5" d x 12.8" h **\$ 20.00**  
 Maximum load: 19.8 lb  
 Maximum stacking: 5  
 JAN# 18723713



**PP CARRYING BOX WITH LOCK / SMALL / FLAT**  
 Size: 9.8" w x 14.5" d x 5.7" h **\$ 9.00**  
 Maximum load: 8 lb  
 Maximum stacking: 14  
 JAN# 61793016



**PP CARRYING BOX WITH LOCK / SMALL / DEEP**  
 Size: 9.8" w x 14.5" d x 12.8" h **\$ 15.00**  
 Maximum load: 17 lb  
 Maximum stacking: 5  
 JAN# 61793030

